

## **03. TECHNICAL SPECIFICATIONS**

### 3.1 SPECIFICATIONS OF THE ACCESSORIES FOR BUOY ANCHORING SYSTEM OF SPM

The bidder shall indicate whether the required specifications are met by them by marking (Yes) if it meets the requirements/comply and (No) if it is not, in front of each requirement/specification in the right-hand corner of each item. Variations and/or deviations from specification, if any, shall be illustrated clearly in detail. Complete technical specification details shall also provide together with following.

Item No.	Qty	Unit	Description	Specification	Compliance Yes/No
1	04	No.	90mm (3 ½" approx.) dia. length 55m (180ft) studless link off shore mooring chain, All common links,	<ul style="list-style-type: none"> <li>• Material: Grade R3</li> <li>• Wire Diameter: (90mm or 3 ½")</li> <li>• Finish: Black Tarred</li> <li>• Chains to be manufactured in accordance with the latest version of W22 IACS requirements.</li> <li>• Minimum Proof load - 4412kn</li> <li>• Minimum Breaking load - 6647kn</li> </ul>	
2	04	No.	76mm (3") dia. length 180ft studless link offshore mooring chain, All common links,	<ul style="list-style-type: none"> <li>• Material: Grade R3</li> <li>• Wire Diameter: (76mm or 3")</li> <li>• Finish: Black Tarred</li> <li>• Chains to be manufactured in accordance with the latest version of W22- IACS requirements</li> <li>• Minimum Proof load - 3242kn</li> <li>• Minimum Breaking load - 4884kn</li> </ul>	
3	06	No	"Kentor" Joining Shackle (76 mm or 3")	<ul style="list-style-type: none"> <li>• For joining 76mm or 3" (dia.) stud link chain</li> <li>• Material - Grade U3/R3</li> </ul>	
4	06	No.	"Kentor" Joining Shackle (90mm or 3½)	<ul style="list-style-type: none"> <li>• For joining 90mm or 3½" (dia.) stud link chain</li> <li>• Material - Grade U3 /R3</li> </ul>	
5	03	No.	76mm (3") dia. Stud Link Chain (Tanker End) - Chafe Chain	<ul style="list-style-type: none"> <li>• 24 Nos. common links</li> <li>• 01 No. enlarged link</li> <li>• 01 No. special end link with a pad eye respectively (Detail of special end link is attached herewith</li> <li>• Material - Grade R3/U3</li> <li>• Minimum Proof load - 3242kn</li> <li>• Minimum Breaking load - 4884kn</li> <li>• Chafe Chains to be manufactured in accordance with the latest version of W22 (Appendix-A)-IACS requirements to comply OCIMF requirements.</li> </ul>	

6	03	No.	<b>76mm (3") dia. Stud Link Chain (SPM Buoy End) - Chafe Chain</b>	<ul style="list-style-type: none"> <li>• 01 No. end link</li> <li>• 01 No. enlarge link</li> <li>• 04 Nos. common links</li> <li>• 01 No. enlarged link</li> <li>• 01 No. end link</li> <li>• Material - Grade R3/U3</li> <li>• Minimum Proof load - 3242kg (for-76mm dia.)</li> <li>• Minimum Breaking load - 4884kn (for 76mm dia.)</li> <li>• Chafe Chains to be manufactured in accordance with the latest version of W22 (Appendix-A)-IACS requirements to comply OCIMF requirements.</li> </ul>	
7	08	No.	<b>85 Tons Safety D type shackle, 2 nuts with cotter pins, As FED Spec RR-C-271D</b>	<ul style="list-style-type: none"> <li>• 85 Ton forged &amp; galvanized Anchor Shackle with safety pin (2 Nut &amp; Cotter pin) for mooring hawser system and 76mm chafe chain</li> <li>• In accordance with OCIMF standards</li> <li>• Dimensions/material and proof load - As per attached sheet</li> </ul>	
8	02	No.	<b>55 Ton Safety Bow shackle, As FED Spec RR-C-271D</b>	<ul style="list-style-type: none"> <li>• 55 Ton forged &amp; galvanized Bow-Shackle with safety pin (Nut &amp; Cotter pin)</li> <li>• Material - ASTM A 153</li> <li>• Pin Material - High Strength Alloy steel</li> <li>• Standard - Fed Spec. RR-C-271D or equivalent</li> <li>• Minimum Breaking load = 5xSWL</li> </ul>	

### **General Conditions**

- 01.** Recognized third party inspection certificates for Material, Mill test certificate (in accordance with W22 IACS requirements and/or Standard - Fed Spec. RR-C-271D or equivalent), Dimension of links, quality, quantity, packaging & Marking requirements and load testing shall be sent before shipment.
- 02.** 3<sup>rd</sup> party pre-shipment inspectors should be one of the following institutions.
  - a. Lloyds
  - b. ABS
  - c. API
  - d. DNV
  - e. BV
- 03.** Country of origin/manufacturer shall be of USA, Europe South Africa and Japan and shall be mentioned clearly.

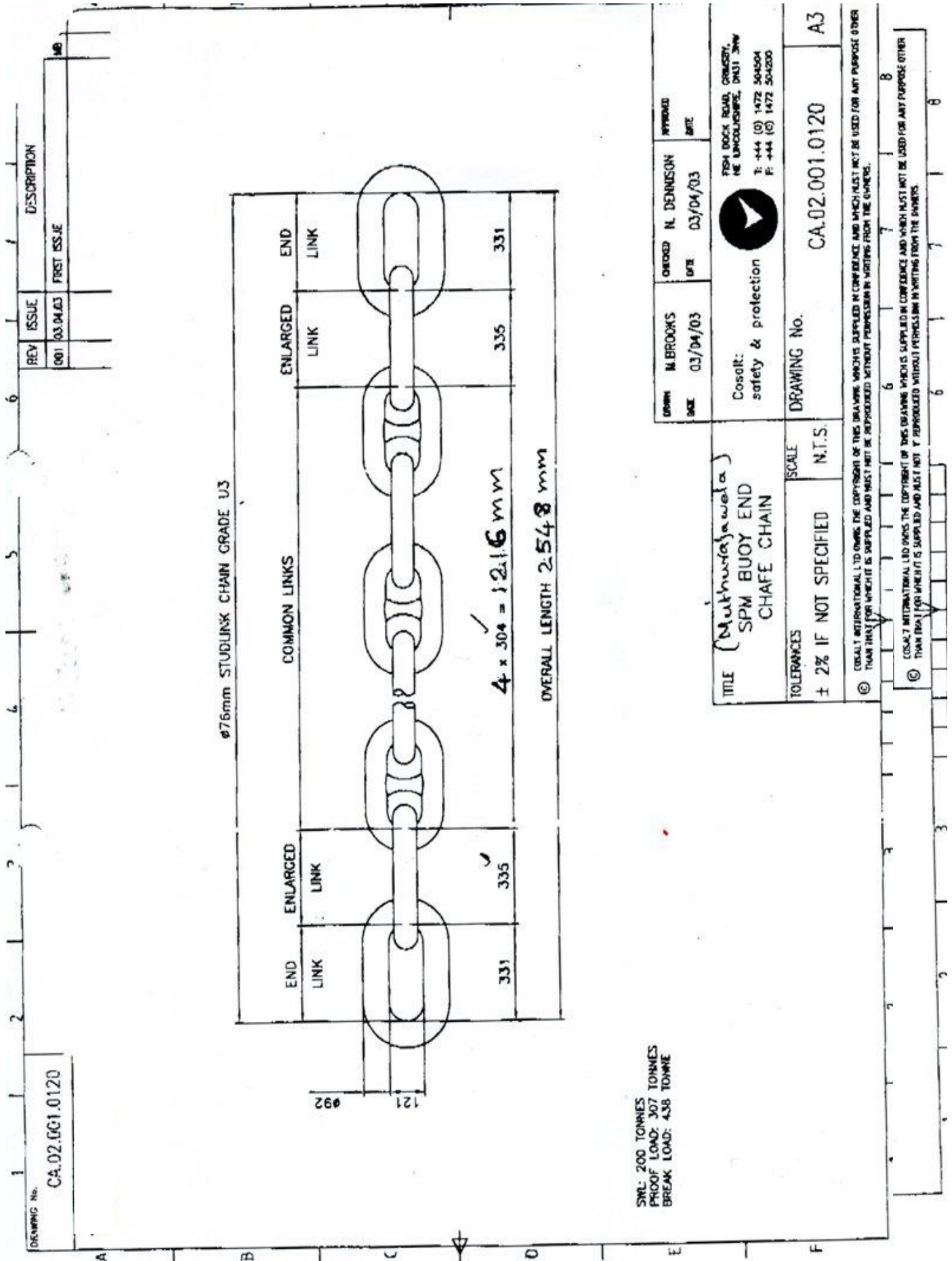
- 04.**Warranty shall be 10 years for material and manufacturing defects. (to be specified by a covering letter).
- 05.**Corrosion/Wear & Tear shall be within threshold limit (10% metal loss of stud link diameter) during warranty period.
- 06.**The Past Performance (supply) records of the brand offered for the last 5 years to the USA, European countries, South Africa & Japan together with details of clients should be submitted.
- 07.**Following information to be clearly indicated on each item by steel dye stamping or by water resistant paint.
- a.** Heat number & load
  - b.** CPSTL order & Tender Number
  - c.** Manufacturer's name & Country of Manufacturing
- 08.**Rejection of item will be done as per the criteria given in the W22 document.

**Signature of the Bidder:** ..... **Date:**.....

**(Common Company Seal)**



# Drawing for Item 06



## Drawing for Item 07

